

SomaScan[®] 7K Assay v4.1: Sample Preparation Plasma and Serum Kits User Manual

September 2023

This user manual describes the steps for the processing of plasma and serum sample using the SomaScan Assay 7K kit and is applicable to kit part numbers 900-00020 and 900-00021.

Table of Contents

| | |
|--|----|
| 1. Introduction..... | 4 |
| 2. Principle of the Assay..... | 4 |
| 3. Limitations of the Procedure..... | 4 |
| 3.1. For Research Use Only..... | 4 |
| 3.2. Sample Matrices..... | 5 |
| 3.3. Procedure..... | 5 |
| 3.4. Restrictions..... | 6 |
| 3.5. Patents and Trademarks..... | 6 |
| 3.6. Notice..... | 6 |
| 3.7. Copyright..... | 6 |
| 3.8. For Technical Support..... | 7 |
| 4. Warnings..... | 7 |
| 5. Initial Setup Requirements..... | 7 |
| 5.1. Required Equipment..... | 7 |
| 5.2. Equipment Monitoring..... | 7 |
| 6. Material Provided & Storage Conditions..... | 8 |
| 7. Other Supplies Required, but not supplied in the SomaScan Assay 7k kit..... | 8 |
| 8. Sample Collection and Storage..... | 8 |
| 8.1. General Blood Sample Processing Requirements..... | 8 |
| 8.2. EDTA Plasma processing..... | 9 |
| 8.3. Serum processing..... | 9 |
| 9. Setup of the SomaScan Assay 7k: Sample Preparation (Duration: ~1.25 h)..... | 10 |
| 9.1. Consumables preparation..... | 10 |
| 9.2. Tecan Fluent Startup and Platform Initialization..... | 10 |
| 9.3. SomaScan Assay 7k Sample Preparation Script..... | 14 |
| 9.4. Binding Reaction..... | 17 |
| 9.5. Robot Cleanup..... | 17 |
| 9.6. Sample Plate Map..... | 18 |

- 10. SomaScan Assay 7k Assay Auxiliary Reagent Prep (Duration: ~10 min) 19
 - 10.1. Auxiliary Preparation..... 19
 - 10.2. Sample Documentation..... 20
- 11. Setup of the SomaScan Assay 7k Assay (Duration: ~2.5 h)..... 21
 - 11.1. Consumables preparation..... 21
 - 11.2. Buffer Preparation..... 21
 - 11.3. SomaScan Assay 7k Script..... 22
 - 11.4. End of Assay Tasks 24
 - 11.5. Cyanine 3 Reading of Eluate..... 25
- 12. Microarray Hybridization (Duration: ~30 min) 26
- 13. Clean-up (Duration: ~10 min)..... 29
 - 13.1. Slides and archive plate 29
 - 13.2. Documentation..... 29
 - 13.3. Day 2 preparation..... 29
- 14. Microarray Processing (Duration: ~0.75 h + 3.5 h scan time) 29
 - 14.1. Preparation 29
 - 14.2. Slide Washing 30
 - 14.3. Microarray Scanning and Feature Extraction (FE) 32
- 15. QC and Data Upload (Duration: ~30 min)..... 34
 - 15.1. QC of Feature Extraction output..... 34
 - 15.2. Data upload 35
- 16. References 35
- 17. Appendix 1..... 36
- 18. Appendix 2: Available Kits and their Components 37
- 19. Appendix 3 Instructions for Adjustment of RGA Gripper Fingers 39

Manufactured and Distributed by:

SomaLogic, Inc.
 2945 Wilderness Place, Boulder, CO 80301
 Tel: 303 625 9000
 E-mail: info@somallogic.com

1. Introduction

This kit contains the components required to analyze 85 human plasma (kit part number 900-00020) or 85 human serum samples (kit part number 900-00021) in the SomaScan® Assay 7k format.

2. Principle of the Assay

The SomaScan® Assay 7k Kits are designed for use with the Tecan Fluent 780 equipped to run the SomaScan Assay 7k.

The SOMAmer® reagents are supplied pre-bound onto a magnetic resin in 96-well format and for each of the three sample dilutions a unique SOMAmer Bead Plate is supplied. The neat biological samples and controls are diluted 1 to 5 in a matrix specific diluent. Two additional dilutions are prepared (1 to 200 and 1 to 20,000) using a serial dilution. The diluted samples are pipetted into the appropriate 96-well plate. After a binding step the unbound substances are washed away. A biotinylation reagent is added to each well for the labeling of the proteins bound to the SOMAmer reagents on the beads. Following washes to remove excess biotinylation reagent the samples are exposed to UV light which releases the SOMAmer reagents and their binding partners from the magnetic resin. Magnets separate the magnetic resin from the solution, which is transferred onto a new set of magnetic beads. After binding the biotinylated proteins with corresponding SOMAmer reagents to the new magnetic beads a series of wash steps removes the SOMAmer reagents that did not bind to a protein. The addition of a buffer elutes the bound SOMAmer reagents from the proteins. Magnets separate the magnetic beads from the solution which is recovered. The eluted SOMAmer reagents are added to microarrays. The SOMAmer reagents bind to complementary probes on the array during the hybridization reaction. Following the microarray washing the microarray slides are processed in an Agilent Microarray scanner system where a laser excites the fluorophore intrinsic to the SOMAmer reagent. The fluorescence intensity is proportional to the available epitopes of the corresponding proteins in the original sample.

3. Limitations of the Procedure

3.1. For Research Use Only

The SomaScan® Assay 7k, SomaScan® Assay 7k Kits, and SOMAmer® reagents may only be used for their intended purpose as described in and in strict accordance with the protocols and other materials accompanying them. The SomaScan Assay 7k, SomaScan Assay 7k Kits, and SOMAmer reagents are developed, designed, intended, and sold to the Institution for research purposes only and are not for use in diagnostic procedures. The SomaScan

Assay7k, SomaScan Assay 7k Kits and SOMAmer reagents are not to be used by the Institution or any Third Party for human consumption, diagnostic, clinical or therapeutic applications, or be included or used in any drug intended for human, agricultural or cosmetic use. All care and attention should be exercised in the handling of the SomaScan Assay 7k, SomaScan Assay 7k Kits, and SOMAmer reagents by following appropriate research lab practices.

3.2. Sample Matrices

The SomaScan Assay 7k method was validated using human EDTA plasma and serum samples. Samples collected using other blood collection tubes (for example citrate plasma or heparin plasma) should work as well but SomaLogic cannot guarantee the performance of the kits.

3.3. Procedure

1. The kit should not be used beyond the expiration date on the kit label.
2. To ensure accurate results, the SomaScan Assay 7k protocol must be precisely followed. Changes in volumes, timing, or steps can lead to failure of assay quality control metrics resulting in difficult, time-consuming, and resource-intensive troubleshooting. Once started, the SomaScan Assay 7k has no natural stopping points and is time sensitive. Be prepared - make sure all required reagents, consumables and equipment are ready and labeled appropriately as outlined below.
3. All samples must be aliquoted into 0.5 mL 2D barcoded tubes from Matrix (ThermoFisher Scientific PN: 3744) and must be placed into a Matrix rack along with the 11 SomaScan assay controls provided with the kit. It is recommended to distribute the controls across all 12 column and all 8 rows.
4. Use new reagents and containers and be mindful of aerosol-based contamination as minor contamination can result in assay artifacts.
5. Reagent reservoirs and plates must be clearly labeled, to facilitate identification, confirm orientation, and allow for efficient performance of procedural steps.
6. The only difference between a serum and plasma kit for the SomaScan Assay 7k is the sample diluent and controls that are part of the -80C components kit.
7. SOMAmer reagents in the SOMAmer Bead Plates are light sensitive. They are generally stable in indoor ambient lighting but are sensitive to long-wave UV light. The best practice is to keep all SOMAmer Bead Plates protected from light, such as by covering them with foil.

8. A user checklist (SomaScan Assay 7k Kit – Experienced User Checklist Serum and Plasma, D0004622) is provided for trained, experienced users to follow during the performance of the assay and to complete as a record of each study conducted.
9. Certain steps of the SomaScan 7k protocol require specific volumes that are critical to the success of the assay run. These volumes are called out in this manual and the Experienced User Checklist.
10. When running a Fluent method, the analyst will follow prompts and select **Next Page** or **Continue** as instructed in **TouchTools** after completing advised steps.
11. **Note:** The option to **Stop** or **Continue** is always visible within **TouchTools** located in the bottom right-hand corner of the screen while the method is running. Only select **Stop** when needing to conduct an emergency stop of the method. Only select **Continue** when instructed to do so by a prompt in the method.

3.4. Restrictions

The transfer or sale of any SomaScan Assay or SOMAmer reagent (alone or in any Institution panel or kit), outside of the scope of the agreement is strictly prohibited. For purposes of clarity, these restrictions do not prohibit the Institution from providing SomaScan services to a third party or conducting research in collaboration with another entity. Further, any and all reverse engineering or alteration of any SOMAmer reagent to determine its sequence and/or structure is strictly prohibited.

3.5. Patents and Trademarks

Please visit the following link to view the patent and trademark notice:

<https://somallogic.com/patents/>

<https://somallogic.com/somascan-assay-somascan-access-and-somascan-deployment-patent-and-trademark-notification/>

<https://somallogic.com/somamer-reagent-patent-and-trademark-notice/>

3.6. Notice

All reagents, equipment and other supplies (hereinafter "Materials") recommended, by way of example, for use within this Application Note and purchased by the user are to be used by the user in compliance with the terms and conditions, and any restrictions and limitations, as set forth by the third party supplier or manufacturer from which the user purchased or obtained the Materials.

3.7. Copyright

©2021 SomaLogic, Inc.; No part of this user manual or any of its contents may be reproduced, copied, modified or adapted, without the prior written consent of SomaLogic,

Inc., unless otherwise indicated for stand-alone materials. Commercial use and distribution of the contents of this user manual is not allowed without express and prior written consent of SomaLogic, Inc.

3.8. For Technical Support

For help and technical information please submit your questions to email at TechSupport@somallogic.com or call 1-844-SOMAmer.

4. Warnings

All biological samples should be considered as containing infectious disease pathogens. Follow your institutional guidelines for biosafety.

Some components in this kit contain a preservative which may cause an allergic skin reaction. Avoid breathing mist.

The SomaScan Elution Buffer is classified with a warning label and can cause eye irritation and skin irritation. For further details please refer to the SDS document (available upon request).

The 10x Slide Block is classified with a warning label and can cause eye irritation and skin irritation. For further details please refer to the SDS document (available upon request).

The 2x Hybridization Buffer is classified with a warning label and causes serious eye damage and can cause skin irritation. The 2x Hybridization Buffer may cause damage to organs through prolonged or repeated exposure. The 2x Hybridization Buffer is harmful to aquatic life with long lasting effects. For further details please refer to the SDS document (available upon request).

Wear personal protective equipment (lab coat, protective gloves, safety glasses). Wash hands thoroughly after handling. Refer to the SDS, available upon request, to use of the kits.

5. Initial Setup Requirements

5.1. Required Equipment

Please refer to the SomaScan Assay 7k Kit – Equipment List (D0004619) for a complete equipment list.

5.2. Equipment Monitoring

To ensure consistent performance of the SomaScan Assay 7k, it is recommended that routine maintenance, calibration and monitoring of key pieces of equipment be performed. In particular, the supplemental maintenance and calibration protocols supplied by

SomaLogic for the Tecan instrument and by Agilent for the microarray hybridization oven and the microarray scanner system should be followed.

6. Material Provided & Storage Conditions

For a detailed list of the components provided in a SomaScan Assay 7k Kit and the types of kits available, please see Appendix 2.

Upon receipt of the SomaScan Assay 7k Kits the components should be stored at the indicated temperature. The SomaScan Assay 7k Kit is shipped in three parts, one on dry ice one on blue ice and one at ambient temperature.

| Kit Component name | Part number | Storage temperature |
|--|-------------|-------------------------|
| SomaScan Assay 7k, ambient components | 899-00042 | Ambient (+10 to +30 °C) |
| SomaScan Assay 7k, ambient components, no slides | 899-00047 | Ambient (+10 to +30 °C) |
| SomaScan Assay 7k, 4C components | 899-00043 | +4 °C (+2 to +8 °C) |
| 899-00044 SomaScan Assay 7k, -20C components | 899-00044 | -20 °C (-10 to -30 °C) |
| SomaScan Assay 7k, -80C Plasma components | 899-00045 | -80 °C (-70 to -90 °C) |
| SomaScan Assay 7k, -80C Serum components | 899-00046 | -80 °C (-70 to -90 °C) |
| Filled Bottle, Assay Buffer | 651-00125 | +4 °C (+2 to +8 °C) |

7. Other Supplies Required, but not supplied in the SomaScan Assay 7k kit

Please refer to the SomaScan Assay 7k – Consumable List (D0004620) for a complete list of required disposables. This list is also available in Appendix 1 at the end of this document.

8. Sample Collection and Storage

The sample collection and storage conditions listed below are intended as general guidelines. Sample stability has not been evaluated.

8.1. General Blood Sample Processing Requirements

Proper processing of the collected samples is critical. Many tubes have a minimum and maximum fill line and these requirements should be followed and no additional additives should be added to the samples. It is particularly important that time constraints are

observed and that samples are not left at room temperature longer than necessary. Samples should be processed and frozen at $-80\text{ }^{\circ}\text{C}$ within 2 hours of collection.

8.2. EDTA Plasma processing

1. Process samples within 30 min of collection.
2. Perform all steps at room temperature. Do not chill the vacutainer prior to processing.
3. Centrifuge plasma tubes at room temperature. If within tube manufacturer's specification, spin at $2,200\times g$ ($2,200\text{ RCF}$ – not RPM) for 15 min. Set centrifuge to maximum acceleration with full brake.
4. Draw off only the plasma layer. Take care not to disturb buffy coat when aliquoting by leaving some plasma behind and avoiding the cell layer.
5. Aliquot sample immediately into appropriately labeled tubes (130 μL total sample or two 52 μL aliquots in preferred tubes).
6. Place aliquoted samples in a $-80\text{ }^{\circ}\text{C}$ freezer. If samples must be frozen at $-20\text{ }^{\circ}\text{C}$ rather than $-80\text{ }^{\circ}\text{C}$, an aliquot volume of 0.5 mL to 1 mL is required. Maximum recommended storage time at $-20\text{ }^{\circ}\text{C}$ is 3 weeks.

8.3. Serum processing

1. Perform all steps at room temperature. Do not chill the vacutainer prior to processing.
2. Allow serum to clot for 60–90 min at room temperature prior to centrifugation.
3. Centrifuge serum tubes at room temperature. If within tube manufacturer's specification, spin at $2,200\times g$ ($2,200\text{ RCF}$ – not RPM) for 15 min. Set centrifuge to maximum acceleration with full brake.
4. Draw off only the serum layer.
5. Aliquot sample within 30 min of centrifugation into appropriately labeled tubes (130 μL total sample or two 52 μL aliquots in preferred tubes).
6. Place aliquoted samples in a $-80\text{ }^{\circ}\text{C}$ freezer. If samples must be frozen at $-20\text{ }^{\circ}\text{C}$ rather than $-80\text{ }^{\circ}\text{C}$, an aliquot volume of 0.5–1 mL is required. Maximum recommended storage time at $-20\text{ }^{\circ}\text{C}$ is 3 weeks.

9. Setup of the SomaScan Assay 7k: Sample Preparation (Duration: ~1.25 h)

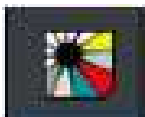
9.1. Consumables preparation

1. Obtain and label five Nunc Round Bottom Plates on the front and left-hand side, where the notch is towards the analyst and in the lower left-hand corner
 - Dil 1 (**D1**)
 - Extra Dil 1 (**ED1**)
 - Dil 2 (**D2**)
 - Extra Dil 2 (**ED2**)
 - Dil 3 (**D3**)
2. Obtain three stacks of 200 µL Nested Tips, 8 wafers per stack, white cover removed
3. Obtain one stack of 50 µL Nested Tips, 8 wafers per stack, white cover removed

9.2. Tecan Fluent Startup and Platform Initialization

NOTE: Complete the following actions prior to thawing the biological samples as a conservative measure if unforeseen technical issues arise with the instrument. If multiple assays are performed within a day the following steps only need to be completed once.

1. Startup of robot
 - Turn on computer connected to the Tecan Fluent robot
 - Wait to initiate Fluent software until all hardware is turned on
 - Turn on Fluent robot (Myrius box)
 - Turn on power strip controlling Thermal Magnetic Shaker (TMS) control box and BioShake shakers
 - Open the FluentControl software

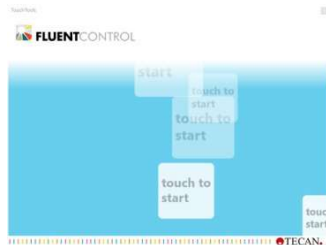


NOTE: Do not interrupt the software while it is loading. The Driver Framework window will pop up then disappear when the software is ready

SomaScan Assay 7k User Manual, Serum and Plasma



- When instructed, touch anywhere on the TouchTools screen



- Log into the FluentControl software
 - Select username
 - Enter password
- 2. If the MCA head adapter is attached to the MCA head, proceed to Step 3
 - a. If the MCA head adapter is not attached to the MCA head, follow the steps below
 - Ensure the Deck Segment System MCA is mounted to grid position **23** on the robotic deck
 - Ensure the deck segment is securely in position with the yellow switch on the bottom of the carrier flipped to the right, locking it in place
 - Ensure Rack Head Adapter MCA is mounted on the Deck Segment System MCA with label on rack facing analyst at position **23-2**
 - Ensure both robotic arms are away from the Photocleavage light source to prevent collision errors during instrument initialization
 - From the TouchTools home screen select
 - System Care
 - Get Head Adapter
 - Green Play Button to start the Get Head Adapter method
 - The MCA will perform the action of initializing then attaching the Head Adaptor
 - After method completion, remove deck segment with MCA head adapter cradle from Fluent deck grid position **23**
 - Flip the yellow switch on the bottom front of carrier to the left
 - This will unlock the carrier from the robotic deck allow for front to back movement

SomaScan Assay 7k User Manual, Serum and Plasma

- Remove carrier by moving it forward and up
 - Careful of the plastic pin-attachments in the rear, they are prone to breakage if the carrier is forcefully removed
- Install Nest Segment, 6-Position, 7mm on grid position **23** of Fluent deck
 - Ensure the rear pins of the deck segment are secure to the robot deck
 - Flip the yellow switch on the bottom front of carrier from left to right to secure the carrier in place

3. Inspection of gripper fingers

- Inspect gripper fingers for deformities, damage, and debris
 - If debris is present, clean gripper fingers with an alcohol wipe
 - If there are deformities or damage do not proceed and notify your robotics specialist or contact SomaLogic tech support.
- Check leveling of the RGA fingers
 - Gently move RGA to an unobstructed carrier position with a flat surface
 - Gently pull RGA head down until fingers are just above the flat surface
 - If both fingers are parallel with surface, manually raise the RGA head
 - If fingers are not evenly parallel with the surface, see **Appendix 3** for instructions on how to level the RGA gripper fingers

4. Shaker Communication Test

 If any portion of the Shaker Communication Test fails, do not proceed, and notify SomaLogic Tech Support.

- From TouchTools home screen select
 - Method Starter
 - Shaker Communication Test
 - Green Play button to initiate the Shaker Communication Test Method
- The method will execute a series of tests
 - Watch each test carefully
- The method requires the user to acknowledge the successful completion of each test
 - Follow the robotic prompts

5. Waste Collection bottle

- Connect waste collection bottle to the waste trough
 - Screw the waste bottle cap to the bottle
 - Attach the tubing from the waste trough to the bottle cap using the quick connector

NOTE: To allow proper venting, make sure barbs are securely connected in the quick release fitting.

Reagent Preparation

1. Electronic Documentation

- Obtain a copy of the SomaScan Assay 7k Workbook (D0004623)
- Save the workbook with the StudyID
 - The study ID should consist of a letter code for your institution followed by a digit year, a consecutive number and Set#
 - Example: SL-21-002_Set001

2. Retrieve Samples

- Retrieve the sample rack containing the randomized samples (85 research samples)
 - If not done previously add the SomaScan Assay 7k controls from the matrix specific Kit, SomaScan Assay 7k, -80C components (899-00045 or 899-00046)
 - 11 SomaScan control samples
 - Calibrator v4.1 in quintuplet
 - QC1 Sample v4.1 in triplicate
 - Blank in triplicate
 - The control samples should be distributed across the number of columns of samples analyzed.
 - As a general guidance one control per column and at least one control per row.
 - Do not place the replicates next to reach other

3. Obtain the following reagents

NOTE: Make sure to use the kit type (serum or plasma) that matches the samples and controls in the assay. The only difference between serum and plasma kits is the sample diluent and the controls.

For details of the components within each kit refer to Appendix 2.

SomaScan Assay 7k User Manual, Serum and Plasma

| Reagent/Kit | Amount | Item/Part Number | Storage Location |
|---|--------|--|--------------------------|
| Assay Buffer (AB) | 1 each | 651-00125 | Ambient room temperature |
| Kit, SomaScan Assay 7k, ambient components | 1 each | 899-00042 | |
| Kit, SomaScan Assay 7k, 4 °C components | 1 each | 899-00043 | 4 °C storage |
| Kit, SomaScan Assay 7k, -20 °C components | 1 each | 899-00044 | -20 °C storage |
| Sample Diluent (D-P or D-S) from SomaScan Assay 7k, -80 °C components | 1 each | 651-00072 in 899-00045 or 651-00073 in 899-00046 | -80 °C storage |

- Record the lot numbers of the kit components and the AB in the Reagents tab of the workbook
- Store the SOMAmer-Bead Plates (part of SomaScan Assay 7k, -20 °C components) on the bench top until needed

4. Prepare reagents

- Sample rack
 - Remove Matrix rack lid
 - Place sample rack on a rack thawing station and turn on
 - Set a timer and thaw samples for at least 15 min
- Sample diluent (**D-P** or **D-S**)
 - Confirm 25 °C water bath temperature is 25 °C (± 2.0 °C)
 - Place the sample diluent in water bath
 - Set a timer and thaw the sample diluent for at least 20 min
- 10X Slide Block (**3-B**)
 - Thaw Slide Block in 25 °C water bath
 - Retrieve at the end of the Sample Preparation protocol for Auxiliary Reagent preparation
- 100X Tag Reagent (**1-T**) and Tag Diluent (**1-D**)
 - Place the 100x Tag Reagent aliquot in a 25 °C water bath
 - Place the Tag Diluent aliquot in 25 °C water bath
 - Retrieve at the start of the Assay protocol

9.3. SomaScan Assay 7k Sample Preparation Script

1. Fluent preparation

- Setup gravity feed trough
 - Fill refillable trough bottle with 1 L of Assay Buffer (**AB**)

SomaScan Assay 7k User Manual, Serum and Plasma

- Place bottle base on deck position Left Rail Pin #7 and refillable trough on deck position 16-4
 - Route the tubing so it's positioned in front and under deck carriers 2 and 9, just above the TouchTools screen
- Insert refillable trough bottle into the bottle base
 - The bottle will click into place when properly secured
- Ensure trough fills
 - Ensure no large bubbles are present in tubing as this will prevent trough filling
- From TouchTools home screen select
 - Method Starter
 - SomaScan Sample Prep
 - Green Play Button
 - Acknowledge the RUO prompt
 - When prompted enter the study ID
 - The study ID should consist of a letter code for your institution followed by a digit year, a consecutive number and Set#
 - Example: SL-21-002_Set001

2. Fluent deck setup

- Obtain the consumables prepared in **Step 9.1**
 - Dil 1 (D1)
 - Extra Dil 1 (ED1)
 - Dil 2 (D2)
 - Extra Dil 2 (ED2)
 - Dil 3 (D3)
 - Three stacks of 200 µL Nested Tips, 8 wafers per stack, no cover
 - One stack of 50 µL Nested Tips, 8 wafers per stack, no cover
 - Three foil seals
- Obtain a clean empty tip wafer
- Obtain the SOMAmer-Bead Plates and carefully remove the foils seal
 - Make sure to securely hold the SOMAmer-Bead Plates while removing the seals
- When prompted by the robotic script, add the following items to the Fluent deck and wait to add samples and Dil 1 plate as instructed

| Deck position | Item |
|---------------|---|
| 2-2, 2-3, 2-4 | Stack 200 µL Nested Tips (8 wafers per stack, no lid) |
| 2-6 | Stack 50 µL Nested Tips (8 wafers per stack, no lid) |
| 23-1 | Dil 3 (D3) |

| Deck position | Item |
|---------------------|---|
| 23-2 | Extra Dil 2 (ED2) |
| 23-3 | Dil 2 (D2) |
| 23-4 | Extra Dil 1 (ED1) |
| 30-4 (waste trough) | clean empty tip wafer |
| TMS 1 | V4.1 SOMAmer-Bead Plate Dil 1 (foil seal removed) |
| TMS 2 | V4.1 SOMAmer-Bead Plate Dil 2 (foil seal removed) |
| TMS 3 | V4.1 SOMAmer-Bead Plate Dil 3 (foil seal removed) |

- With 7 min left in diluent thaw press **Continue** within Fluent Control to initiate pipetting Assay Buffer to the dilution plates
 - Carefully watch all buffer transfers to the dilution plates and take note of any short transfers, bubbles or other abnormalities
 - The robot will pause again and prompt to add **samples** and **Dil 1 (D1)** plate to deck.

3. Preparing Samples

- After the 15 min sample thaw, remove the sample rack from the rack thawing station
 - Ensure samples are completely thawed by observing tubes in the bottom of the rack
 - If not thawed return rack to the thawing station and thaw for additional 5 min
- Turn the rack thawing station off
- Centrifuge sample rack at 1000× g for 1 min
 - Remove sample tube caps using a decapper
 - Confirm that no sample is present in caps
 - If sample is present in the caps
 - Replace caps on tubes
 - Centrifuge sample rack at 1000× g for 1 min
- Cover sample Matrix rack with the plastic rack lid until further Instruction

4. Preparing Dilution plates

- After 20 min sample diluent thaw, prepare **Dil 1** sample plate
 - Remove sample diluent from the 25 °C water bath
 - Ensure diluent is completely thawed
 - Invert diluent several times to thoroughly mix, avoid creating bubbles
- Pour sample diluent into a clean reagent reservoir
- Pipette **140 µL sample diluent (critical volume)** into wells of **Dil 1** sample plate
- Centrifuge plate at 1000× g for 1 min

SomaScan Assay 7k User Manual, Serum and Plasma

- When prompted, add the following items to the robot deck

| Deck | Item |
|------|--|
| 23-5 | Dil 1 (D1) |
| 23-6 | Sample Rack (no lid, lock tabs facing analyst) |

- Select **Continue** within the TouchTools prompt to initiate the sample dilution and SOMAmer Bead Plate preparation steps
 - Carefully watch for short volume transfers, bubbles, bead aspiration or any other abnormality during pipetting
 - Document any observation in the plate map tab of the SomaScan Assay 7k Workbook
- When prompted carefully remove SOMAmer Bead Plates

9.4. Binding Reaction

1. Binding setup

- Seal each SOMAmer Bead Plate with a foil seal
 - Ensure each well is tightly sealed
- Place the sealed SOMAmer Bead Plates in the binding shaker
 - Confirm that the shaker is set to

| Category | Setting |
|-------------|--------------------|
| Temperature | 28 °C |
| Time | 3 hours 30 minutes |
| Mix Speed | 850 rpm |

- Turn the shaker on and confirm the shaker reaches **850 rpm**
- Record the following In the Plate Map tab of the SomaScan Assay 7k workbook
 - Binding start time
 - Calculated binding end time (**start time + 3.5 hours**)

9.5. Robot Cleanup

1. Fluent Cleanup

- Remove sample rack from deck and retain to create the Sample Import sheet
- Clear deck
 - Remove remaining tip boxes
 - Remove and discard sample dilution plates and wafer the from the waste trough into a biohazardous waste bin
 - Leave the Tecan powered on and the Fluent Control running
 - Recommendation: Wipe down deck with a disinfectant cloth

9.6. Sample Plate Map

1. A Sample Import Sheet is required for SomaLogic to normalize and calibrate the data set. The Sample Import Sheet is part of the SomaScan Assay 7k Workbook and is being populated through information entered in the Reagents and the Plate Map tab of the workbook.
2. Complete the Assayed Sample List tab in the following way (all fields are case sensitive):
 - The following information is required for SomaLogic control samples (part of the kit):
 - Sample Type
 - Calibrator
 - QC
 - Buffer
 - StudyId
 - Control
 - Barcode
 - Lot number of the control (from label)
 - For example: 200169B
 - The following column must be blank for SomaLogic control samples (part of the kit):
 - SampleID
 - The following information is mandatory for Customer samples:
 - StudyId
 - SampleId
 - Optional Information for Customer samples ONLY:
 - TimePoint
 - SampleGroup
 - SampleDescription
 - Sample Type
 - Volume submitted
 - Optional1
 - Optional2
3. Complete the “Plate Map” tab of the SomaScan Assay 7k Workbook
The “Plate Map” tab in the workbook is intended to be used for tracking information during the hybridization and readout part of the SomaScan Assay 7k. Some

SomaScan Assay 7k User Manual, Serum and Plasma

information in the table is populated through the information entered in the “Assayed Sample List” tab.

- Enter or scan the SlideID #
- If samples clogged or had low volume, select the checkbox in the column “Clogged” or “Low Volume”
 - The selection will show up in the Sample Comments column of the plate map
- Assay Notes
 - If aspiration of beads during the assay process after photocleavage are observed select the check box in the column “C2 Aspiration”
 - If the subarray leaked during the hybridization or slide loading process, select the check box in the column “Leak”
 - Enter any other well specific assay noted into the “Assay Notes” column. This is a free text field.
 - All these notes will show up in the Assay Notes column of the plate map

The bottom of the “Plate Map” tab allows for the tracking of additional information

- Verification of the slide ID (important if multiple assay versions are performed within the lab)
 - Initial and date for tracking the execution of procedure steps
 - Tracking of hybridization oven, timer used for the hybridization, hybridization start and end time and dates
4. Notes that impact the entire run or all samples on a single slide (i.e. temperature or reagent wash issues) should be submitted with the Agilent data in the body of the data upload email for the respective SlideID. The issue(s) will be entered into the Experiment notes in the database and will be returned in the SQS header of the data set.

10. SomaScan Assay 7k Assay Auxiliary Reagent Prep (Duration: ~10 min)

10.1. Auxiliary Preparation

NOTE: The following plates may be prepared in any order.

1. Magnetic Bead (**M-B**) plate preparation
 - Obtain an Abgene Plate and label Mag Beads (**M-B**)
 - Retrieve the Magnetic Beads from the 4 °C kit
 - Vortex Magnetic Beads for at least 1 min to ensure proper bead resuspension

SomaScan Assay 7k User Manual, Serum and Plasma

- Immediately pour vortexed beads into a clean reagent reservoir
 - Pipette **75 µL** Magnetic Beads (**critical volume**) into wells of Mag Bead Plate
 - Seal plate with a foil seal
 - Store plate at 4 °C
2. MB Prep Buffer (**M-P**) plate preparation
- Obtain a Nunc Round Bottom Plate and label MB Prep Buffer (**M-P**)
 - Pour the MB Prep Buffer into a clean reagent reservoir
 - Pipette **100 µL** MB Prep Buffer into wells of MB Prep Buffer plate
 - Seal plate with a foil seal
 - Store plate at 4 °C
3. 10X Slide Block (**3-B**) plate preparation
- Obtain a V-Bottom Plate and label Slide Block (**3-B**)
 - Retrieve 10X Slide Block aliquot from 25 °C water bath
 - Vortex for approximately 15 sec
 - Quick spin in a microfuge
 - Pour into a clean reagent reservoir
 - Pipette **15 µL** 10X Slide Block into wells of Slide Block plate
 - Seal plate with a foil seal
 - Store plate at 4 °C
4. MB Block (**2-B**) Plate Preparation
- Obtain a V-Bottom Plate and label MB Block (**2-B**)
 - Retrieve the MB Block aliquot from 4 °C kit
 - Vortex MB Block and pour into a clean reagent reservoir
 - Pipette **30 µL** MB Block into wells of MB Block plate
 - Seal plate with a foil seal
 - Store plate at 4 °C

10.2. Sample Documentation

1. Sample preparation and well-specific notes
- Ensure any general sample preparation notes, well specific notes, or observations have been recorded in the SomaScan 7k Workbook
 - Update **Assay Overview tab** of the workbook
 - Transfer sample preparation notes to Section 2 of **Assay Overview tab**; initial and date
 - If there were no sample preparation notes, enter “None”
 - Update the electronic Plate Map of the workbook

- Add all well-specific notes to the Plate Map tab of the workbook
- Save the workbook file

11. Setup of the SomaScan Assay 7k Assay (Duration: ~2.5 h)

NOTE: Consumable and reagent preparation (11.1 – 11.2) should be Initiated ~ 30 min prior to Binding End Time.

11.1. Consumables preparation

1. Obtain four Pyramid Base Troughs and label on the front and left-hand side, where the notch is towards the analyst on the bottom left-hand corner
 - Quench Buffer (**1-Q**)
 - Photo-Cleavage (**1-PC**)
 - Elution Buffer (**2-E**)
 - Tag
2. Obtain one V-Bottom Trough and label on the front and left-hand side, where the notch is towards the analyst on the bottom left-hand corner
 - MB Wash Buffer (**2-W**)
3. Obtain two Abgene Plates and label on the front and left-hand side, where the notch is towards the analyst on the lower left-hand corner
 - Catch-1 Elution (**C1E**)
 - Archive
 - Include Plate Name, assay date, and initial
4. Obtain one V-Bottom Plate and label on the front and right-hand side, where the notches are towards the analyst
 - Hyb
5. Obtain one Black Spec Plate

11.2. Buffer Preparation

1. Retrieve the plates prepared during the auxiliary reagent preparation from 4 °C storage
 - Mag Beads (**M-B**)
 - MB Block (**2-B**)
 - 10X Slide Block (**3-B**)
 - MB Prep Buffer (**M-P**)
2. Centrifuge the following plates at 1000× g for 1 min

SomaScan Assay 7k User Manual, Serum and Plasma

- MB Block (**2-B**)
 - 10X Slide Block (**3-B**)
 - MB Prep Buffer (**M-P**)
3. Firmly place Mag Bead, C1E, and Archive plates into Thermal Adapters
 - Make sure that the plate is securely placed in the Thermal Adapter
 - Remove foil seal from the Mag Bead Plate
 - Cover each plate with a lid
 4. Add the following reagents to the prepared Pyramid Base Troughs, each aliquot is premeasured with the correct volume
 - Quench Buffer (**1-Q**) (85 mL)
 - Photo Cleavage (**1-PC**) (40 mL)
 - Elution Buffer (**2-E**) (20 mL)
 - MB Wash Buffer 20% (**2-W**) (85 mL)
 - Cover each trough with a lid

11.3. SomaScan Assay 7k Script

1. Fluent preparation
 - Log in to FluentControl (if not completed previously)
 - Select username
 - Enter password
2. From TouchTools home screen select
 - Method Starter
 - SomaScan Assay
 - Green Play Button
 - When prompted verify the method version as **V4.1.3.2.A**
 - When prompted enter the study ID
 - The study ID should consist of a letter code for your institution followed by a digit year, a consecutive number and Set#
 - Example: SL-21-002_Set001
3. Fluent deck setup
 - When prompted, verify both lightbulbs in the Photo-Cleavage station are on
 - When prompted, add the following to deck

| Deck Position | Labware |
|---------------|-------------------------------------|
| 2-2, 2-3, 2-4 | 200 µL (8 wafers per stack, no lid) |
| 2-6 | 50 µL (8 wafers per stack, no lid) |
| 9-2, 9-3 | 200 µL (8 wafers per stack, no lid) |

SomaScan Assay 7k User Manual, Serum and Plasma

| | |
|------|---|
| 9-5 | Black Spec Plate (no lid) |
| 9-6 | Hyb plate (no lid) |
| 16-1 | Quench Buffer Trough(1-Q) (lidded) |
| 16-2 | Photo Cleavage Trough (1-PC) (lidded) |
| 16-3 | Elution Buffer Trough (2-E) (lidded) |
| 16-6 | MB Wash Buffer 20% Trough (2-W) (lidded) |
| 23-2 | MB Block Plate (2-B) (lidded) |
| 23-3 | 10X Slide Block (3-B) (lidded) |
| 23-5 | MB Prep Buffer (M-P) (lidded) |
| 23-6 | Tag Trough (empty, no lid) |
| 30-1 | CIE plate in thermal adapter (lidded) |
| 30-2 | Mag Bead plate (M-B) in thermal adapter (lidded) |
| 30-3 | Archive plate In thermal adapter (lidded) |
| 30-4 | Waste trough with clean wafer on top |

- When prompted, verify the MB Wash Buffer 20% trough is locked into place (**16-6**)
- Advance the robotic prompts until instructed to add SOMAmer Bead Plates to the robot deck

4. Post Binding

- At the end of the 3.5 hour binding step
 - Remove SOMAmer Bead Plates from shaker
 - Carefully insert SOMAmer Bead Plates into thermal adapters
 - Carefully remove foil seals

5. Continue with Fluent deck setup

- When prompted, add the following to deck

| Deck Position | Labware |
|---------------|---|
| TMS 1 | Dil 1 SOMAmer Bead Plate in thermal adapter |
| TMS 2 | Dil 2 SOMAmer Bead Plate in thermal adapter |
| TMS 3 | Dil 3 SOMAmer Bead Plate in thermal adapter |

- Advance the robotic prompts until instructed to add Tag Reagent to the robot deck

6. Tag

- Complete the Tag Dilution step, when prompted
 - Retrieve Tag Diluent from 25 °C water bath
 - Retrieve 100x Tag Reagent from 25 °C water bath
 - Vortex 100x Tag Reagent for approximately 5 sec on highest setting
 - Spin down Tag Reagent in microfuge for approximately 5 sec

SomaScan Assay 7k User Manual, Serum and Plasma

- Add **400 µL** Tag Reagent (**1-T**) (**Critical Volume**) to Tag Diluent (**1-D**) bottle
- Gently mix by inversion, avoid creating bubbles
- Pour into the Tag trough at deck position **23-6**

7. Robot pipetting

- Advance the robotic prompts to continue the assay method
 - The method will initiate pipetting aspiration and dispensing
 - Observe MCA tip loading and RGA plate movements
 - Carefully watch for short volume transfers, bead aspiration, or any other sample or assay abnormality
 - Record all observed abnormalities In the SomaScan Assay 7k Workbook

8. Photo-Cleavage

- At the start of Photo-Cleavage, ensure both UV bulbs on Photo-Cleavage station turn on
 - If either bulb does not turn on, promptly contact Tech Support

9. Run Completion Tasks

- Near the end of the robotic script remove Black Spec Plate from deck position 9-5 when prompted
 - Centrifuge Black Spec Plate 1000× g for 1 min
- At the completion of the script remove, save and foil seal the following from Fluent deck when prompted

| Deck Position | Labware |
|---------------|---------------|
| TMS 1 | Archive Plate |
| 9-6 | Hyb Plate |

11.4. End of Assay Tasks

1. Fluent deck cleanup

- Remove, save, and consolidate remaining compatible robotic tips
- Remove, save, and foil seal Slide Block Plate

NOTE: The Slide Block plate is saved as a precautionary measure if for any reason the Hyb plate needs to be remade during the slide dropping procedure **Step 12**. Otherwise, this plate can be discarded into the biohazard waste stream.
- Clear remaining troughs, plates and waste trough tip wafer from deck
 - Discard into biohazard waste stream
- Remove Assay Buffer refillable trough bottle and trough
 - Dispose of Assay Buffer and rinse with tap water followed by DI water

SomaScan Assay 7k User Manual, Serum and Plasma

NOTE: Ensure water is completely drained from the tubing before leaving to dry overnight.

- Wipe down deck and waste chute with a disinfecting wipe
- Remove waste bottle from waste trough and add bleach
 - Allow the waste bottle to bleach for at least 30 min, or overnight
- Exit FluentControl software
 - Exit out of the FluentControl software by selecting File > Exit
- Turn off the power strip connected to the TMS control box and BioShake shakers
- Turn off the Fluent robot (Myrius box)
- Shut down computer connected to the Fluent

2. Assay and well-specific notes

- Ensure general assay notes, well specific noted and any observations have been recorded in the SomaScan Assay 7k workbook
- Update Plate Map tab of the workbook

11.5. Cyanine 3 Reading of Eluate

NOTE: If a Molecular Devices SpectraMax Plate reader is used, SomaLogic can provide a template file with all the required settings.

NOTE: The instructions below are a guideline and will vary depending on the make and model of the fluorescence plate reader used

1. Considerations for the fluorescence of Cyanine 3 are

- Excitation wavelength maximum: 554 nm
- Emission wavelength maximum: 568 nm
- Laser lines used for excitation: 532 nm
- Common filter set used: TRITC (excitation 540/25 (550/25) nm, emission 575 (605/70) long pass, beam splitter 564 (570) nm)

2. General instructions

- Within the fluorescent plate reader software create a new plate
- Load the plate into the fluorescent plate reader
- Read the plate using the settings (example given for SpectraMax plate reader series)
 - Fluorescence
 - Bottom read
 - Excitation wavelength: 535 nm
 - Emission wavelength: 575 nm
 - Cutoff wavelength: 570 nm

3. After the plate has been read

- Remove and retain until analysis is complete
- Save file as Plate Name
- Export a .txt file
- Open the .txt file in Excel and copy the data to Cyanine 3 Analysis tab of the workbook
 - The layout must be a matrix of eight rows and 12 columns corresponding to the format of the 96-well plate
- The Cyanine 3 Analysis worksheet will automatically calculate the following
 - Calibrators
 - Average RFU
 - %CV
 - Blank Control
 - Median RFU
 - %CV
 - Median Blank Control RFU + 3 Standard Deviations
 - QC Sample
 - Average RFU
 - %CV
 - Sample
 - Median RFU
- Evaluate Cyanine 3 results
 - Acceptance criteria:
 - Average RFU Calibrator > Median Blank Control RFU + 3 Standard Deviations
 - The workbook will assess this acceptance criteria and will provide a pass/fail result
- Discard black spec plate after evaluating Cyanine 3 results

12. Microarray Hybridization (Duration: ~30 min)

NOTE: Detailed instructions on using the SureHyb chambers can be found on Agilent's web site at https://www.agilent.com/cs/library/usermanuals/public/G2534-90004_HybridizationChamber_A1.pdf

NOTE: The hybridization plate can be remade using sample eluate from the archive plate if the sample(s) become compromised. Follow procedure in **Appendix 3.**

1. Retrieve the following reagents

SomaScan Assay 7k User Manual, Serum and Plasma

- 2× Hybridization Buffer (**3-H**)
 - Microarray slides
 - Slide ID: 2586338
 - Gasket slides
2. Prepare Hybridization (Hyb) plate
- Transfer 2× Hybridization Buffer (**3-H**) into a clean reagent reservoir
 - Add 25 µL 2× Hybridization Buffer (**3-H**) (**Critical Volume**) to all tested wells of the “Hyb” plate
 - 2× Hybridization Buffer (**3-H**) is extremely viscous. Pipette slowly and drag the tips on the side of the trough to remove any residual volume
 - Carefully mix by pipetting up and down slowly 5 times, then faster 10 times
 - Avoid creating bubbles
 - Centrifuge at 1000x g for 1 minute
 - Foil seal plate
3. Document slide barcode numbers
- Enter the microarray slide barcodes into Plate Map tab of the workbook
 - The barcodes can be entered into the workbook using a hand-held barcode reader
 - Print a copy of the Plate Map
4. Verify the following settings on the 6-channel spanning P300 pipette
- Volume is set at 40 µL
 - Spanning knob is set to 16
5. Load Microarray Slides
- Slide the lever on slide dropper to the “drop” position
 - Load a SureHyb chamber base onto slide dropper with the label opening on the left
 - Load a Gasket Slide with the barcode label to the left and gasket o-rings facing upwards
 - Slide lever on slide dropper to the “load” position
 - From the Hyb plate, load **40 µL (Critical Volume)** of each sample onto a gasket slide in the order shown in **Figure 1**
 - Do not dispense past first stop while dispensing sample to gasket slide
 - Ensure that sample does not touch the gasket edge
 - Avoid creating bubbles

SomaScan Assay 7k User Manual, Serum and Plasma

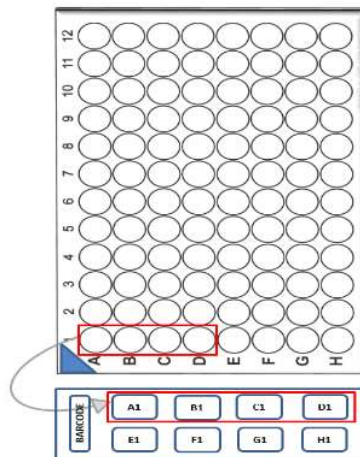


Figure 1

- Verify the microarray slide number against the Plate Map printout as slides are being loaded
 - Place microarray slide onto the slide dropper with **Agilent** label facing down and to the left
 - Handle microarray by edges only; do not touch the interior portion of the microarray
 - Slide lever on slide dropper to the “drop” position
 - Assemble the Hybridization chamber
 - Place chamber top on gasket-slide sandwich
 - Place clamp over assembled hybridization chamber and tighten
 - Ensure the bubble moves freely in each subarray when the assembly is rotated
 - Ensure there is equal volume in each subarray
 - Note any abnormalities (for examples low volume or leaks) in the Sample Import Sheet
 - Repeat for remaining samples
6. Load hybridization oven
- Ensure hybridization oven temperature is $55.0\text{ }^{\circ}\text{C} \pm 2.0\text{ }^{\circ}\text{C}$
 - Set rotator speed to 20 rpm
 - Place hybridization chambers in oven
 - Ensure hybridization chambers are balanced in oven
 - Start a timer for 19 hours
 - Record Hybridization Start Date and Time on Plate Map printout
 - Record Hybridization Calculated End Date and Time on Plate Map printout
 - Calculated End Time = Start Date and Time +19 hours

13. Clean-up (Duration: ~10 min)

13.1. Slides and archive plate

1. Store unused microarray slides in nitrogen-purged desiccator cabinet
2. Seal Archive Plate
 - Seal the Archive plate with a foil seal.
 - Make sure that the seal is tightly adhering to all wells of the plate

NOTE: For longer term storage it is recommended to heat-seal the Archive plate. Simple adhesive sealing will not hold up at -20 °C over a long period of time and sample loss might occur. If heat-sealing is not available, store in an airtight plastic bag.
3. Store Archive plate in -20 °C storage

NOTE: The "Archive" plate should be stored for at least two weeks after hybridization to enable re-hybridization if a hybridization error is detected.

13.2. Documentation

- Ensure well-specific notes have been recorded on Plate Map printout
- Update **Assay Overview tab** of the workbook
- Transfer SomaScan Assay notes to Section 2 of **Assay Overview tab**; initial and date
- If there were no SomaScan Assay notes, enter "None"
- Update Plate Map tab of the workbook
- Transfer well-specific notes from Plate Map printout to Plate Map tab of the workbook
- Save the workbook file

13.3. Day 2 preparation

1. Verify the temperature of the 37 °C incubator and that it contains at least 300 mL Agilent Wash 2

14. Microarray Processing (Duration: ~0.75 h + 3.5 h scan time)

14.1. Preparation

1. Retrieve Agilent Wash 1, Agilent Wash 2, and Acetonitrile (ACN)
2. Record lot numbers and expiration dates in Reagents tab of the workbook

3. Turn **ON** the main power switch on the right side of the SciGene Little Dipper

4. Set up baths

- Ensure baths are free of dust and debris
- Place the 3 baths into the slide washer base slots 1, 2 and 3
- Add a stir bar to all three baths
- Fill baths to fill line (~0.5 cm from the top)
 - Bath 1 with Agilent Wash 1
 - Bath 2 with pre-warmed 37 °C Agilent Wash 2
 - Bath 3 with ACN
- Set stir dial to ~5 for each bath

NOTE: The stir setting is dependent on the slide washer unit and size of stir bar being used. Increase stir speed until dimpling on the surface of the liquid is observed.
- Lower temperature probe for Bath 2 all the way down into the bath
- Turn ON the power switch for Bath 2
 - Press & hold the Set button to view temperature setting:
 - Bath 2 should be set at 37 °C
 - To set the correct temperature press & hold Set and use the ▲ or ▼ buttons
- Cover Baths 1 and 2 with plastic lids if more than 10 min remain until the slide washing
- Cover Bath 3 with a metal lid

5. Set up disassembling dish

- Place slide rack into the disassembly dish
- Add Wash Buffer 1 to the disassembling dish with slide rack
 - Ensure volume of Agilent Wash 1 will thoroughly cover slides in slide rack
- Cover disassembling dish until use

14.2. Slide Washing

1. When 19 hour hybridization is complete

- Visually confirm hybridization oven temperature is 55.0 °C ± 2.0 °C
- Visually confirm hybridization oven speed is set to 20
- Document hybridization deviations on the plate map tab in the Assay Workbook
- Hybridization End Time may be up to 5 min after Calculated End Time on Plate Map


2. Separate slide-gasket slide sandwich (sandwich)

- Remove 2 Hybridization chambers at a time from the hybridization oven
- Open the first hybridization chamber

SomaScan Assay 7k User Manual, Serum and Plasma

- Grasp the slide gasket sandwich by the edges and remove it from the chamber
 - Inspect the slide gasket sandwich for any abnormalities (volume changes, leaks)
 - Note any abnormalities in the plate map
 - Submerge the slide-gasket sandwich into the disassembling dish
 - Gently insert forceps between the slide and the gasket at the barcode
 - Holding the slide upright and separating the gasket from the slide, allow the gasket slide to fall away
 - Place the slide in the slide rack
3. Repeat for the remaining hybridization chambers
4. Gently slide fingers across the tops of the slides to ensure proper placement in the rack
5. Run Wash 1+2 protocol on the SciGene Slide washer
- Remove the covers from the baths if present
 - On the touch screen of the SciGene slide washer
 - Press the Run Protocol button
 - Select program "Wash 1+2"
 - Press Select
 - Press Start Now
 - Quickly and steadily transfer the slide rack from the disassembling dish to Bath 1
 - Submerge the slide rack in Bath 1
 - Align the slide rack with the black lines on the instrument
 - Align the holes in the handle with the two bumps in the gripper paddle as it lowers
- NOTE:** If the gripper closes before the holes align, manually adjust slide rack using the thumb tab.
- When slides are in Bath 1 (This step can be completed after the slide washing procedure is finished.)
 - Discard gasket slides
 - Empty buffer from disassembling dish into sink
 - Rinse disassembling dish with tap water
 - Rinse disassembling dish with DI water
 - Dry disassembling dish with a lint-free wipe
 - When slides have transferred to Bath 2
 - Turn off stir dial for Bath 1
 - Remove Bath 1 from base and empty buffer into sink
 - Rinse Bath 1 with tap water
 - Rinse Bath 1 with DI water

SomaScan Assay 7k User Manual, Serum and Plasma

- Dry Bath 1 with a lint-free wipe
 - When “Wash 1+2” protocol is complete
 - Remove slide rack from gripper paddle using thumb tab
 - Place slide rack on a lint-free wipe to absorb excess liquid
 - Press  button on touch screen
6. Run ACN protocol on the SciGene Slide washer
- On the touch screen of the SciGene slide washer
 - Select program “ACN”
 - Press Select
 - Press Start Now
 - Move slide rack into empty Bath 1
 - Align the slide rack with the black lines on the instrument
 - Align holes in slide rack handle with nodes on gripper paddle
 - While the “ACN” program is running:
 - Turn off the temperature power switch and stir bar for Bath 2
 - Raise the temperature sensor out of Bath 2
 - Remove Bath 2 from the base and empty into the sink
 - Rinse Bath 2 with running tap water
 - Rinse Bath 2 with DI water
 - Dry Bath 2 with lint-free wipes
7. Once the “ACN” program is complete
- Remove the slide rack from gripper paddle using the thumb screw
 - Place the slide rack on a lint-free wipe to absorb any remaining liquid
 - Turn off the stir bar for Bath 3
 - Turn OFF the main power switch on the right side of the SciGene Little Dipper
 - Record any abnormalities during slide washing in the Sample Import Sheet
 - Dispose of the ACN according to institutional requirements

14.3. Microarray Scanning and Feature Extraction (FE)

1. If the Agilent scanner computer is not on, turn on the Agilent scanner computer
2. If the Agilent microarray scanner is not on, turn on the Agilent Microarray scanner using the power switch on the front
 - a. Wait until the scanner is done initializing
3. Open the Agilent Microarray Scan Control software on the Agilent scanner computer

SomaScan Assay 7k User Manual, Serum and Plasma

4. Insert slides into slide holders

- Place a slide holder on a flat surface
- Gently push in and pull up on tabbed end of clear plastic cover to open slide holder
- Retrieve a slide from the slide rack and hold slide by the edges
 - Avoid contact with the face of microarray side
- Ensure that the Agilent label of the slide is facing up and gently lower slide into slide holder with label oriented near hinges
- Close plastic slide cover
 - Push on the tab until it clicks
- Ensure clear tab is flush with holder and that the slide is level
 - If clear tab is not flush with slide holder, use a different holder
- Complete for remaining slides

5. Scan slides

- Select Open Door in Agilent Microarray Scan Control software
- Insert each slide holder into an open slot with the arrow pointing to the left and finger grip facing up
- Select Close Door in Agilent Microarray Scan Control software
- Under Output Folder use the Shift or Ctrl key highlight slides to be scanned
- Select the “...” icon on the right side of the last slide
- Navigate to the designated folder for the study

Note: Make a new folder and enter the folder name as Plate ID or Plate Name if not already present


- Select OK
- Confirm Scan Protocol defaults to “AgilentG3_GX_1Color”
- Add slides to queue
- Select Start Scan if software is not already actively scanning

6. Initiate Agilent Feature Extraction (FE)

- Open the Feature Extraction software
- Select File > New > On-Time Project
- Change the settings of the following fields

| Field | Setting |
|-----------------------------|--|
| Operator | Analyst initials |
| Input/Incoming Image Folder | Folder where the .tif images are saved |
| Grid | Local file only |

| Field | Setting |
|------------------|---|
| Time Out Setting | Ensure settings are configured to allow all slide images for a plate to extract |

- Select the Run project (start) icon 
 - In popup window select “yes” to save the changes
 - navigate to the Incoming Image Folder
 - Name the project Plate ID_FE or Plate Name_FE
 - Select Save
 - If an additional pop-up window appears
 - select All to Extract
 - Select OK
7. Clean the slide washer and hybridization chambers
- Clean temperature sensor of Bath 2 with DI water and a lint-free wipe
 - If there are no succeeding washes for the day, dispose of the acetonitrile according to institutional requirements
 - Return empty Bath 3 to the slide washer, dry with a lint-free wipe, and cover
 - Turn OFF the main power switch on the right side of the SciGene Little Dipper
 - Clean and store hybridization chambers
 - Rinse with DI water
 - Dry with a clean paper towel

15. QC and Data Upload (Duration: ~30 min)

15.1. QC of Feature Extraction output

1. Navigate to the folder where the output file from the Agilent Feature Extraction Software are located.
2. Open each .pdf file within this folder and review
 - Grid Alignment
 - For the four corners of each array, ensure that the crosses that indicate the feature location are in the center of the green circles
 - Histogram of signal
 - The histogram of the blank sample should have a narrow histogram with the peak at ~2 log
 - The histogram for a serum or plasma sample should have a peak at ~3 log
3. Record any observation on the plate map tab of the workbook

15.2. Data upload

1. Create a folder named with the study ID
 - o The study ID should consist of a letter code for your institution followed by a digit year, a consecutive number and Set#
 - Example: SL-21-002_Set001
2. Copy the completed study workbook into the folder
3. Copy the *.txt from the Feature Extraction output into the folder
4. Compress the folder to a zip file
5. Log in to Box (www.box.com) using the username and password assigned to your institution.
6. Navigate to the folder:
 - o SomaScan Data and click on the folder with the year
 - Example: SomaScan Data > 2021
7. Upload the .zip file to this folder
8. Email SomaLogic BI Services bi-services@somalogic.com with the study name in the subject line, and include any study notes, plate notes, or specific instructions.
9. SomaLogic BI Services will:
 - o Enter the experimental data into the SomaLogic database and perform the primary data analysis
 - o Deposit the SQS and adad files to the study folder on Box
 - o Send an email with a notification that the data is available

16. References

| Document ID | Document title |
|-------------|--|
| D0004619 | SomaScan Assay 7k kit – Equipment List |
| D0004620 | SomaScan Assay 7k kit – Consumables List |
| D0004622 | SomaScan Assay 7k kit – Experienced User Checklist Serum and Plasma |
| D0004623 | SomaScan Assay 7k – Workbook |

17. Appendix 1

| Common name | Amount consumed per run | Amount needed per run* |
|---|-------------------------|------------------------|
| Matrix Tubes with Rack | 85 each | 85 |
| 50 µL Nested Tips | 8 wafers | 16 wafers |
| 200 µL Nested Tips | 50 wafers | 64 wafers |
| Pyramid Base Trough | 4 each | 4 each |
| V-Bottom Trough | 1 each | 1 each |
| Lid | 10 each | 10 each |
| Abgene Plate | 3 each | 3 each |
| Nunc Round-Bottom Plate | 6 each | 6 each |
| Nunc V-Bottom Plate | 3 each | 3 each |
| Black Spec Plate | 1 each | 1 each |
| Foil Seals | 12 each | 12 each |
| 300 µL Tips | 1 box | 1 box |
| Gasket Slides | 12 each | 12 each |
| Agilent Wash 1 | 700 mL | 700 mL |
| Agilent Wash 2 | 350 mL | 350 mL |
| Acetonitrile | 350 mL | 350 mL |
| Reagent Reservoir | 6 each | 6 each |
| 20 µL Tips for multi-channel pipette | 2 boxes | 2 boxes |
| 200 µL Tips for multi-channel pipette | 6 boxes | 6 boxes |
| 1000 µL Tips for single channel pipette | 1 tip | 1 tip |

18. Appendix 2: Available Kits and their Components

| Kit part number | Name | Subcomponent part number | Subcomponent Name | Storage Temperature |
|-----------------|---|--------------------------|--|-------------------------|
| 900-00020 | SomaScan Assay 7k – Plasma Kit | 899-00042 | SomaScan Assay 7k, ambient components | Ambient (+10 to +30 °C) |
| | | 899-00043 | SomaScan Assay 7k, 4C components | +4 °C (+2 to +8 °C) |
| | | 899-00044 | SomaScan Assay 7k, -20C components | -20 °C (-10 to -30 °C) |
| | | 899-00045 | SomaScan Assay 7k, -80C Plasma components | -80 °C (-70 to -90 °C) |
| | | 651-00125 | Assay Buffer, 1000 mL | +4 °C (+2 to +8 °C) |
| 900-00021 | SomaScan Assay 7k – Serum Kit | 899-00042 | SomaScan Assay 7k, ambient components | Ambient (+10 to +30 °C) |
| | | 899-00043 | SomaScan Assay 7k, 4C components | +4 °C (+2 to +8 °C) |
| | | 899-00044 | SomaScan Assay 7k, -20C components | -20 °C (-10 to -30 °C) |
| | | 899-00046 | SomaScan Assay 7k, -80C Serum components | -80 °C (-70 to -90 °C) |
| | | 651-000125 | Assay Buffer, 1000 mL | +4 °C (+2 to +8 °C) |
| 900-00022 | SomaScan Assay 7k – Plasma Kit, no slides | 899-00047 | SomaScan Assay 7k, ambient components, no slides | Ambient (+10 to +30 °C) |
| | | 899-00043 | SomaScan Assay 7k, 4C components | +4 °C (+2 to +8 °C) |
| | | 899-00044 | SomaScan Assay 7k, -20C components | -20 °C (-10 to -30 °C) |
| | | 899-00045 | SomaScan Assay 7k, -80C Plasma components | -80 °C (-70 to -90 °C) |
| | | 651-00125 | Assay Buffer, 1000 mL | +4 °C (+2 to +8 °C) |
| 900-00023 | SomaScan Assay 7k – Serum Kit, no slides | 899-00042 | SomaScan Assay 7k, ambient components, no slides | Ambient (+10 to +30 °C) |
| | | 899-00043 | SomaScan Assay 7k, 4C components | +4 °C (+2 to +8 °C) |
| | | 899-00044 | SomaScan Assay 7k, -20C components | -20 °C (-10 to -30 °C) |
| | | 899-00046 | SomaScan Assay 7k, -80C Serum components | -80 °C (-70 to -90 °C) |
| | | 651-00125 | Assay Buffer, 1000 mL | +4 °C (+2 to +8 °C) |

SomaScan Assay 7k User Manual, Serum and Plasma

| Component part number | Component name | Subcomponent part number | Subcomponent name | Quick Code |
|-----------------------|--|--------------------------|--|------------|
| 899-00042 | SomaScan Assay 7k, ambient components | 651-00126 | MB Prep Buffer, 11mL | M-P |
| | | 651-00033 | 2x Hybridization Buffer, 3.5mL | 3-H |
| | | 300-00008-012 | Microarray, 8x60k, 8 per, AMADID#086332, 12 pk | -- |
| 899-00043 | SomaScan Assay 7k, 4C components | 651-00003 | Quench Buffer, 85 mL | 1-Q |
| | | 651-00005 | Elution Buffer, 20 mL | 2-E |
| | | 651-00007 | Photo-Cleavage Buffer, 40 mL | 1-PC |
| | | 651-00030 | MB Block, 3.5 mL | 2-B |
| | | 651-00031 | Magnetic Beads, 8.5 mL | M-B |
| | | 651-00035 | Tag Diluent, 40mL | 1-D |
| | | 651-00074 | MB Wash Buffer 20%, 85 mL | 2-W |
| 899-00044 | SomaScan Assay 7k, -20C components | 651-00120 | SOMAmer Bead Plate Dilution 1 | -- |
| | | 651-00121 | SOMAmer Bead Plate Dilution 2 | -- |
| | | 651-00122 | SOMAmer Bead Plate Dilution 3 | -- |
| | | 651-00008 | 100x Tag Reagent, 460 uL | 1-T |
| | | 651-00009 | 10x Slide Block, 1.8 mL | 3-B |
| 899-00045 | SomaScan Assay 7k, -80C Plasma components | 650-00048 | v4.1 Plasma Calibrator, 65uL | -- |
| | | 650-00049 | v4.1 Plasma QC1 Sample, 65uL | -- |
| | | 650-00033 | Blank, 140uL | -- |
| | | 651-00072 | Plasma Diluent, 17mL | D-P |
| 899-00046 | SomaScan Assay 7k, -80C Serum components | 650-00052 | v4.1 Serum Calibrator, 65uL | -- |
| | | 650-00053 | v4.1 Serum QC1 Sample, 65uL | -- |
| | | 650-00033 | Blank, 140uL | -- |
| | | 651-00073 | Serum Diluent, 17mL | D-S |
| 899-00047 | SomaScan Assay 7k, ambient components, no slides | 651-00126 | MB Prep Buffer, 11mL | M-P |

19. Appendix 3 Instructions for Adjustment of RGA Gripper Fingers

NOTE: Additional details can be found in the Tecan Fluent robot user manual D0004621

1. Remove one of the nest carrier deck segments and replace it with the flat deck segment
2. Manually move RGA head over flat deck segment and lower until fingers are just above surface
3. Take instrument out of Zero-Gravity mode
4. Loosen screws on gripper fingers
5. Using the Move tool in FluentControl, step RGA down until $Z = 0.0$
6. Adjust the gripper fingers so they align flush with the carrier
7. Tighten the screws on both gripper fingers (do not overtighten)
8. Using the Move tool, put RGA back in to Zero-Gravity mode
9. Manually raise RGA head